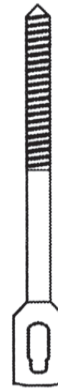
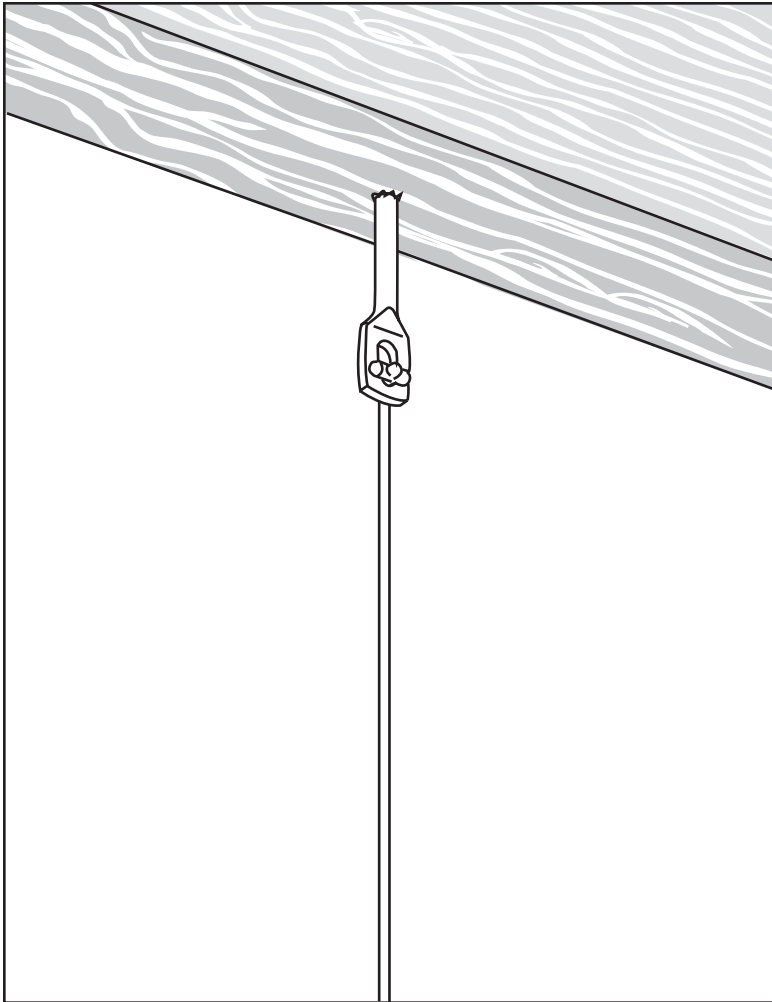


Ceiling Wire Attachment System

WOOD I LAG SCREW W300 DH



Code Compliant

See ICC ER-5367, California DSA IR A-5 Sec. 1.3.1 and direct comparison tests.

Safe

Unique geometry prevents shake out or pull through.

Simple

Easy to use.

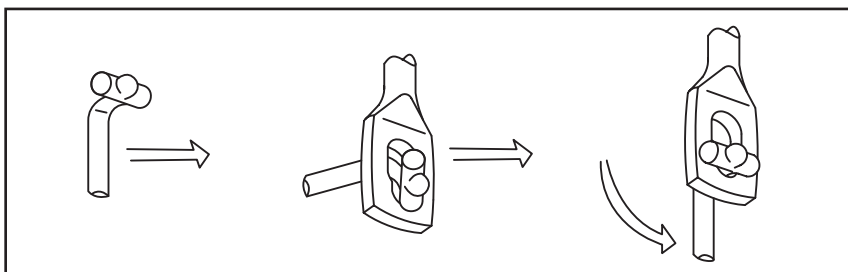
Economic

Saves both time and money.

Versatile

Same wire works with many fasteners.

- Requires **LESS STORAGE** space.
- Generates **LESS WASTE** at jobsites. (Wires can be reused.)
- LESS DAMAGE** in storage and in transit.
- No dangly pre-wrap fasteners. Won't snag vertical wires.



Data Summary

FROM ICC ER-5367:

Table 1 – Allowable Screw Loads (pounds)

I-LAG PART NUMBER	STEEL (THICKNESS) ^{1,3}						WOOD ²			
	No. 22 Gauge (0.03 inch)		No. 20 Gauge (0.036 inch)		No. 18 Gauge (0.047 inch)		No. 16 Gauge (0.062 inch)		Minimum 0.46 Specific Gravity	
	Tension	45 Degrees ⁴	Tension	45 Degrees ⁴	Tension	45 Degrees ⁴	Tension	45 Degrees ⁴	Tension	45 Degrees ⁴
750 SD or 750 SD DH	135	170	170	190	245	280	340	375	NA	NA
W300 or W300 DH	NA	NA	NA	NA	NA	NA	NA	NA	270	140

For SI: 1 inch = 25.4 mm, 1 lbf = 4.45 N, 1 psi = 6.9 kPa.

NA = Not Applicable

¹Values are based on steel sheets having a minimum yield strength of 38,000 psi.

²Based on minimum 1 1/2" screw penetration into wood member.

³Based on minimum three full threads protrusion beyond the steel member.

⁴Load applied 45 degrees from the longitudinal axis of the fastener.

Findings: The I-LAG brand eye lag screws and wire system described in this report **COMPLY WITH THE 1997 UNIFORM BUILDING CODE....**

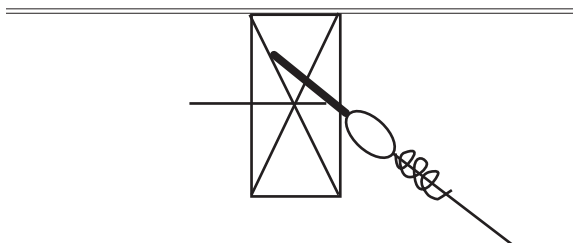
**Table 2 -Wire System Comparison *
Convention Wrapped Wire (HW**) vs. DH**

Wire Attachment System	Fastener Type	0° (tension)	45° Side Pull	45° Back Pull
HW	I LAG SCREW	612	621	-
DH	I LAG SCREW	628	624	606
HW	90° Clip	574	580	-
DH	90° Clip	663	598	564
HW	45° Clip	629	-	-
DH	45° Clip	663	-	644

*Table compiled from SGS Report 117417-01
Copy available upon request.

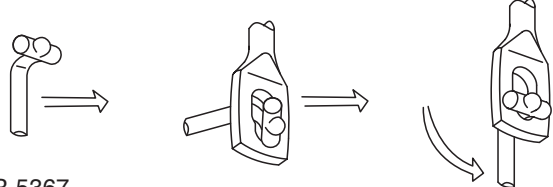
** HW = Hospital Wrap-3 tight turns (min.) on 1 1/2" per California DSA IR 25-2

Hospital Wrap:



DH Wire:

DH HANGER WIRE (12 GAUGE)



ER-5367

Only for use with suspended ceilings
(Light-duty, intermediate-duty or heavy-duty)
Only use in pure tension as show above.

DISTRIBUTED BY DOC'S MARKETING. PATENT PENDING.

For technical questions email: forrest@docsmarketing.com or call (800) 544-8706